



Terpenes Profile

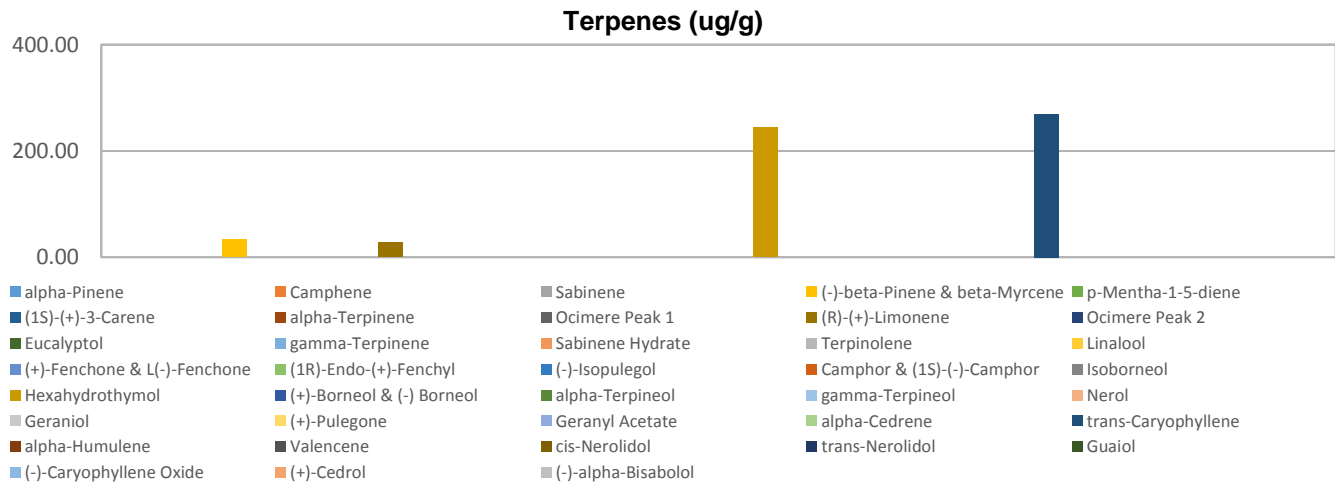
Customer: High Plateau Pharmaceuticals
Customer Sample ID: Salve 1000mg MB
Laboratory Number: 201907-0301
Extraction Technician: DF
Analytical Chemist: CB

Extraction Date(s): 7/11/2019
Analysis Date(s): 7/11/2019

Terpene	Results	Terpene	Results
	ug/g		ug/g
alpha-Pinene		Isoborneol	
Camphene		Hexahydrothymol	244.51
Sabinene		(+)-Borneol & (-) Borneol	
(-)-beta-Pinene & beta-Myrcene	33.47	alpha-Terpineol	
p-Mentha-1-5-diene		gamma-Terpineol	
(1S)-(+)-3-Carene		Nerol	
alpha-Terpinene		Geraniol	
Ocimere Peak 1		(+)-Pulegone	
(R)-(+)-Limonene	27.89	Geranyl Acetate	
Ocimere Peak 2		alpha-Cedrene	
Eucalyptol		trans-Caryophyllene	269.62
gamma-Terpinene		alpha-Humulene	
Sabinene Hydrate		Valencene	
Terpinolene		cis-Nerolidol	
Linalool		trans-Nerolidol	
(+)-Fenchone & L(-)-Fenchone		Guaiol	
(1R)-Endo-(+)-Fenchyl		(-)-Caryophyllene Oxide	
(-)-Isopulegol		(+)-Cedrol	
Camphor & (1S)-(-)-Camphor		(-)-alpha-Bisabolol	

Reporting Limit is roughly 40 ug/g depending on amount extracted.

Empty result indicates data is less than detection limit.



Altitude Consulting, LLC utilizes NIST traceable Reference Standards and Certified Reference Material to calibrate analytical instruments along with proven analytical methods. The methods are applied in the most ethical manner following good laboratory practice guidelines. The results of this report are based solely on the sample submitted and cannot be reproduced.



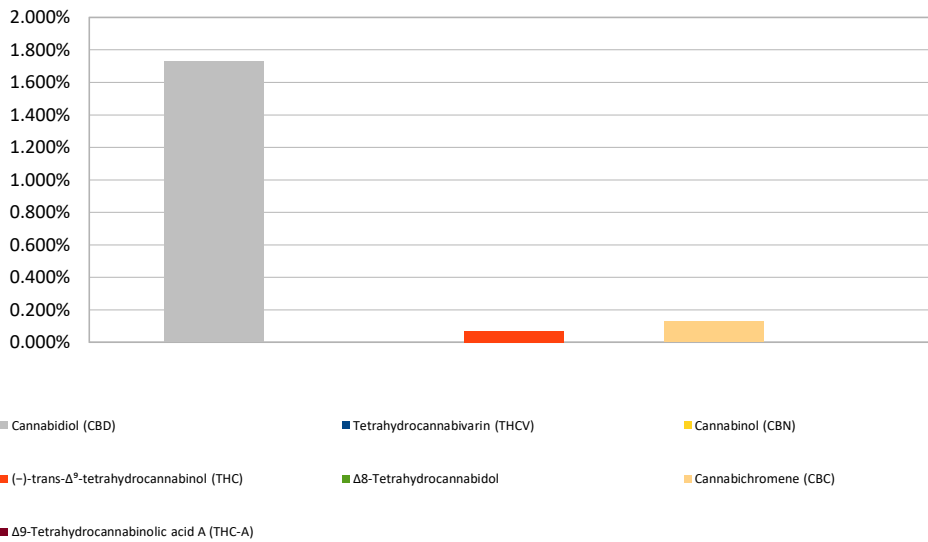
Cannabinoid Profile

Customer: High Plateau Pharmaceuticals
Customer Sample ID: Salve 1000mg MB
Laboratory Number: 201907-0301
Extraction Technician: DF
Analytical Chemist: MF
Servings per Bottle (g): 56.6

Extraction Date(s):	Analysis Date(s)
7/11/2019	7/11/2019

Cannabinoid (HPLC)	Results		
	mg/g	mg/g	mg/Container
Cannabidivarin (CBDV)	<0.1		
Cannabidiolic acid (CBD-A)	<0.1		
Cannabigerolic acid (CBG-A)	<0.1		
Cannabigerol (CBG)		0.69	39.1
Cannabidiol (CBD)		17.3	979.6
Tetrahydrocannabivarin (THCV)	<0.1		
Cannabinol (CBN)	<0.1		
(-)-trans-Δ ⁹ -tetrahydrocannabinol (THC)		0.68	38.5
Δ ⁸ -Tetrahydrocannabinol	<0.1		
Cannabichromene (CBC)		1.28	72.4
Δ ⁹ -Tetrahydrocannabinolic acid A (THC-A)	<0.1		
Cannabinoids Total	Percent	mg/g	
Max Active THC	0.07%	0.68	
Max Active CBD	1.73%	17.31	
T. Active Cannabinoids	2.00%	19.96	
Total Cannabinoids	2.00%	19.96	
Ratios			
25.45 :1 CBD to THC		0.04 :1 THC to CBD	

Cannabinoid (%)



Altitude Consulting, LLC utilizes NIST traceable Reference Standards and Certified Reference Material to calibrate analytical instruments along with proven analytical methods. The methods are applied in the most ethical manner following good laboratory practice guidelines. The results of this report are based solely on the sample submitted and cannot be reproduced.